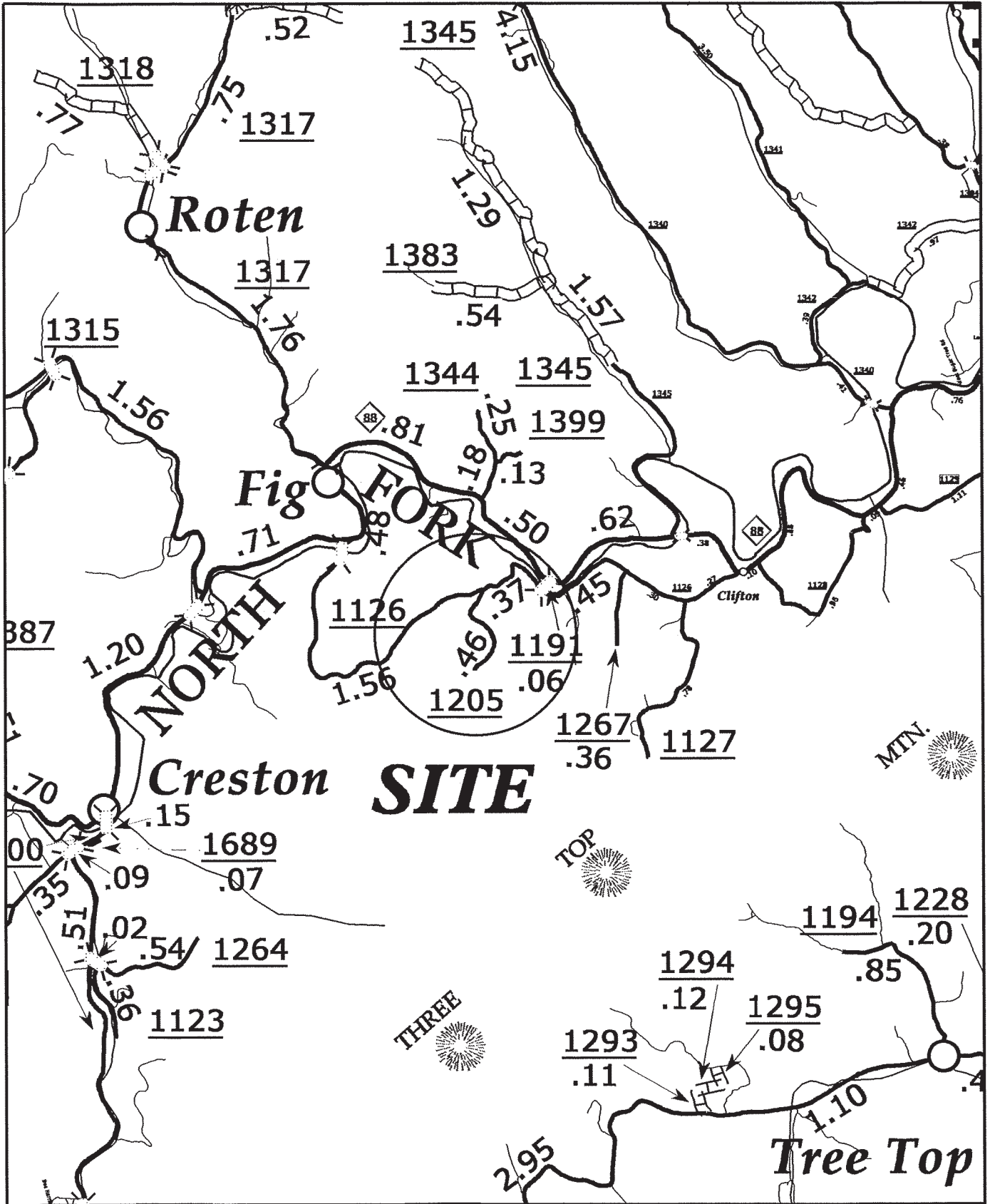


PROJECT NO. 11C.005034, 11C.005075	SHEET NO.	TOTAL NO.

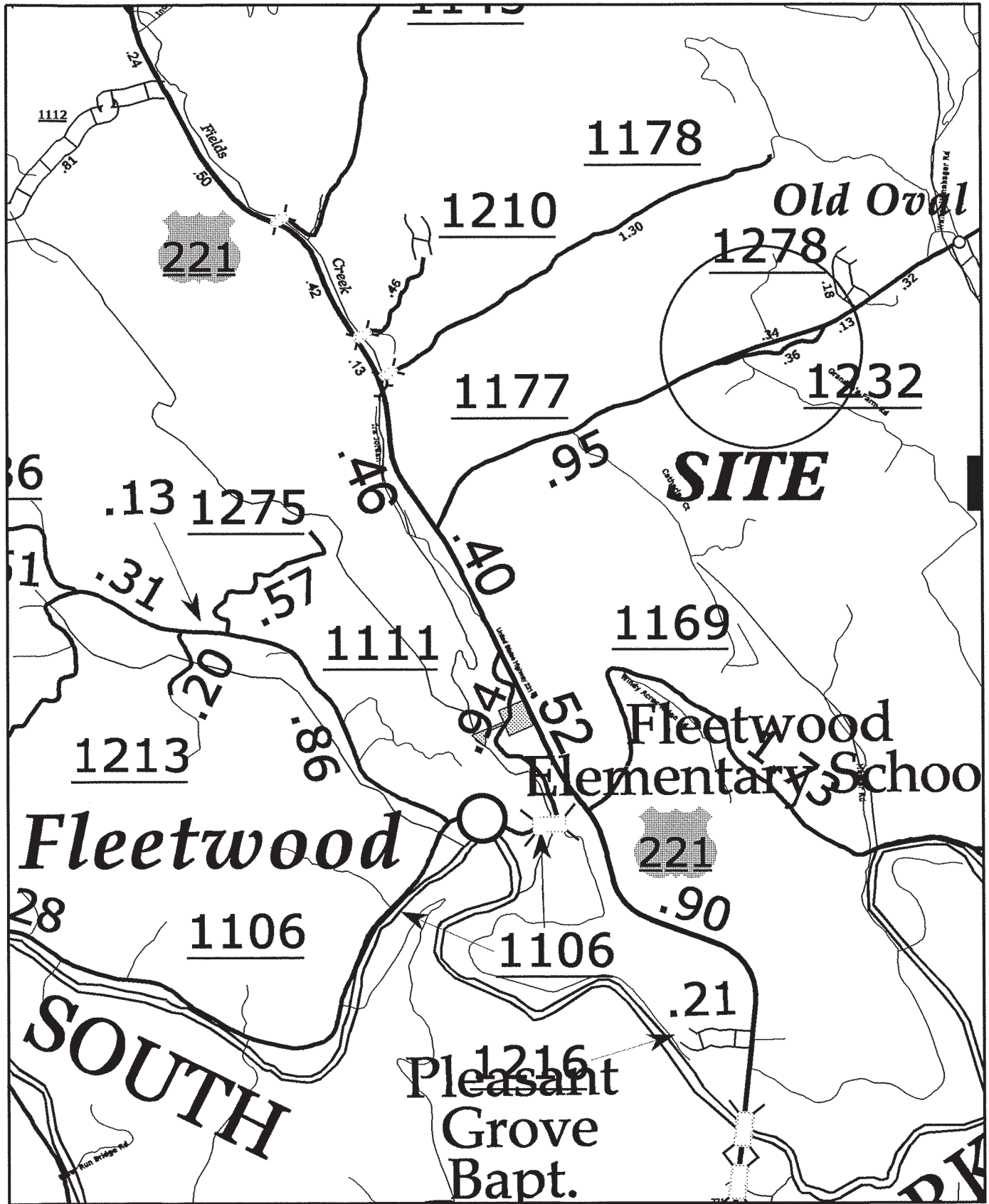
SUMMARY OF QUANTITIES

PROJECT NO	COUNTY	MAP NO	ROUTE	DESCRIPTION	TYP	LENGTH MI	WIDTH FT	BORROW EXCAVATION CY	AGGREGATE BASE COURSE TONS	CONDITIONING EXISTING BASE SY	INCIDENTAL STONE BASE TONS	SHOULDER RECONSTRUCTION SMI	INTERMEDIATE COURSE, 119.08 TONS	ASPHALT BINDER FOR PLANT MIX TONS	ASPHALT SURFACE TREATMENT TRIPLE SEAL SY	SEED & MULCHING AC
11C.005034	Ashe	1	SR 1205	FROM SR 1126 TO DEAD END	NO	0.438	16		25	4,111.00	50		474	23	4,111	
11C.005034	Ashe	2	SR 1232	FROM SR 1177 TO 1177		0.341	16	68			50	0.68	369	18	3,201	0.33
TOTAL FOR PROJ NO. 11C.005034																
						0.779		68	25	4,111.00	100	0.68	843	41	7,312	0.33
11C.005075	Ashe	3	SR 1145	FROM END PAVEMENT TO BEGIN PAVEMENT	3	0.53	19	415	25	5,908.00	50	1.06	679	33	5,908	0.39
TOTAL FOR PROJ NO. 11C.005075																
						0.53		415	25	5,908.00	50	1.06	679	33	5,908	0.39
GRAND TOTAL																
						1.309		483	50	10,019.00	150	1.74	1,522	74	13,220	0.72

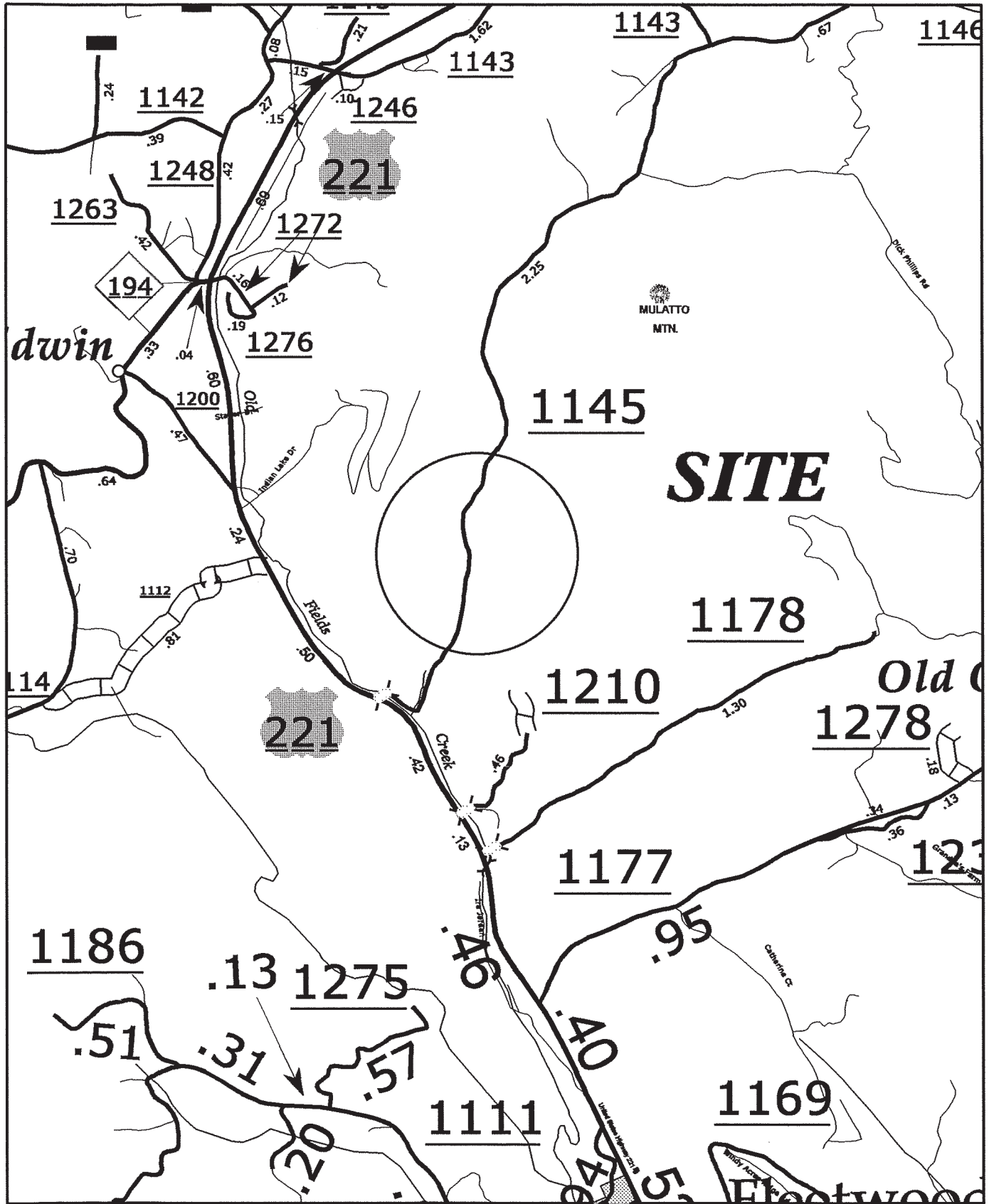
**SR 1205 MISTY MTN. RD. LOCATED OFF OF
NC HWY 88 TO SR 1191 JACK ROLAND RD. (0.04 MILE)
TO SR 1126 ED LITTLE RD. (0.37 MILE) TO PROJECT.**



**SR 1232 SURBER RD. LOCATED OFF OF
US HWY 221 TO SR 1177 WATER TANK RD. (0.95 MILE)
TO PROJECT.**

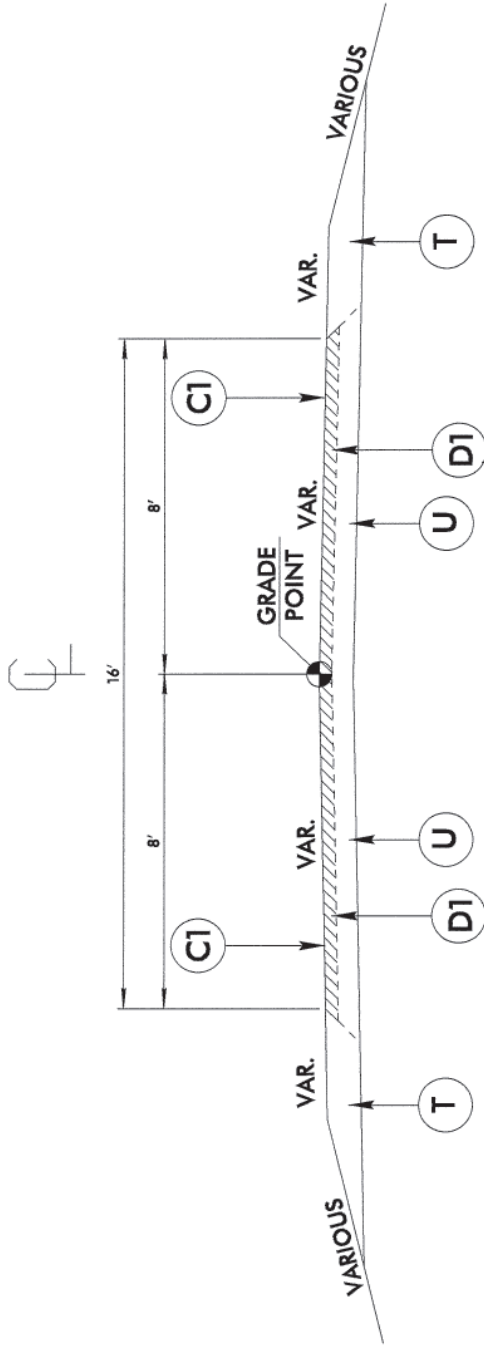


**SR 1145 MULATTO MTN. RD. LOCATED OFF OF
US HWY 221 BEGINNING OF PROJECT IS 0.32 MILE
FROM INTERSECETION.**



TYPICALS AND PAVEMENT SCHEDULES

PROJECT REFERENCE NO. / JC0005034
 SHEET NO. /



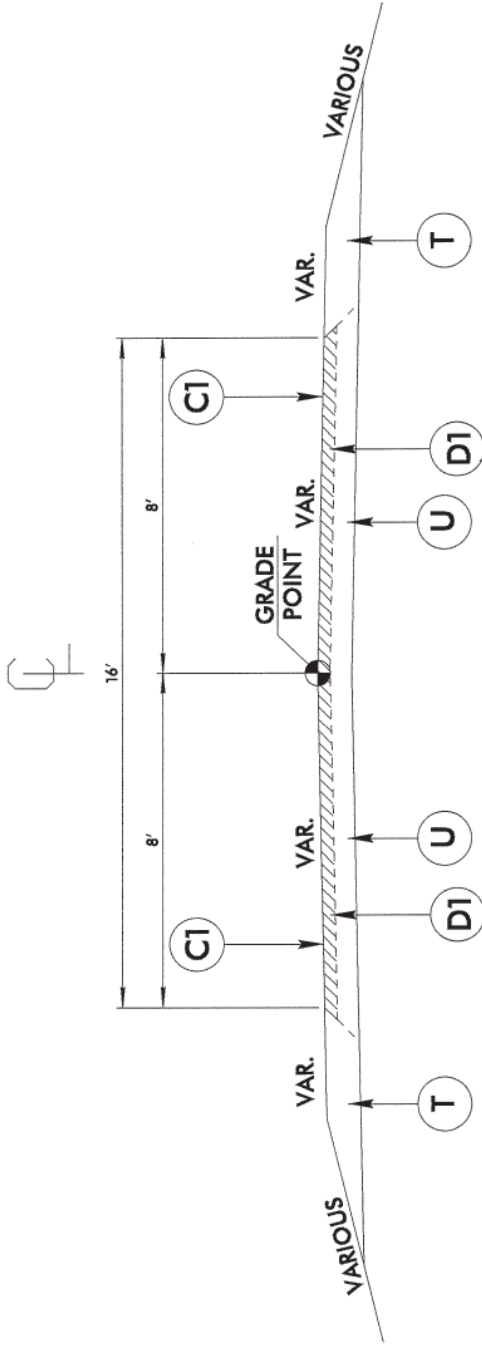
TYPICAL SECTION

SR 1205 MISTY MTN. RD.

C1	ASPHALT SURFACE TREATMENT (TRIPLE SEAL)
D1	PROP. APPROX. 2" ASPHALT CONCRETE SURFACE COURSE, TYPE I19.0B, AT AN AVERAGE RATE OF 228 LBS. PER SQ. YD.
U	EXISTING 8" AGGREGATE BASE COURSE.
T	PROPOSED SHOULDER MATERIAL

TYPICALS AND PAVEMENT SCHEDULES

PROJECT REFERENCE NO. IIC005034
 SHEET NO. 2

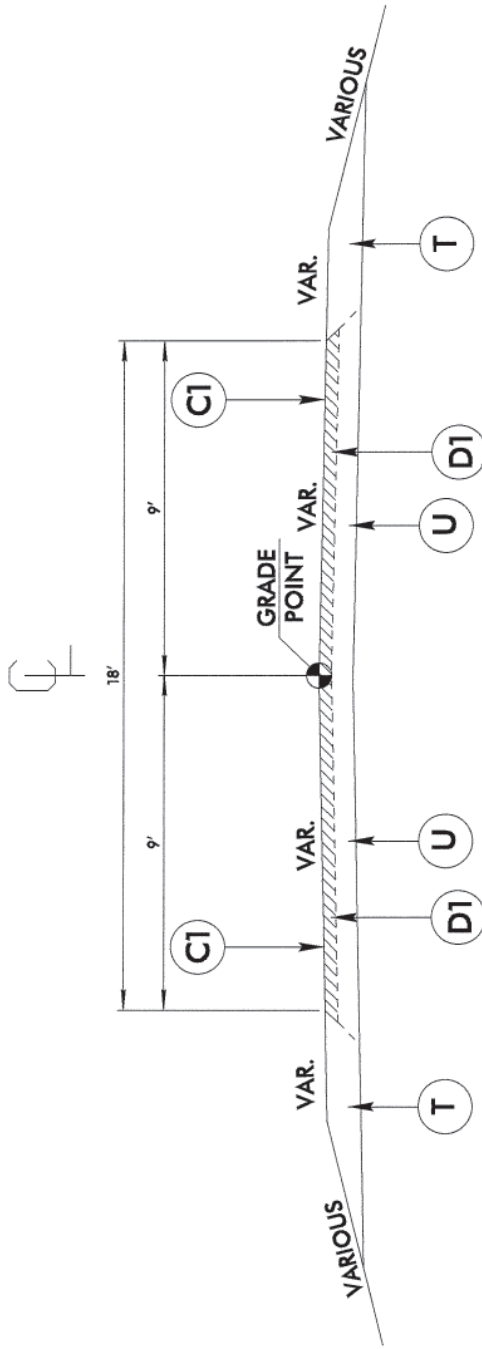


TYPICAL SECTION

SR 1232 SURBER RD.

C1	ASPHALT SURFACE TREATMENT (TRIPLE SEAL)
D1	PROP. APPROX. 2" ASPHALT CONCRETE SURFACE COURSE, TYPE I19.0B, AT AN AVERAGE RATE OF 228 LBS. PER SQ. YD.
U	EXISTING 8" AGGREGATE BASE COURSE.
T	PROPOSED SHOULDER MATERIAL

TYPICALS AND PAVEMENT SCHEDULES



TYPICAL SECTION

SR 1145 MULATTO MTN. RD.

C1	ASPHALT SURFACE TREATMENT (TRIPLE SEAL)
D1	PROP. APPROX. 2" ASPHALT CONCRETE SURFACE COURSE, TYPE I19.0B, AT AN AVERAGE RATE OF 228 LBS. PER SQ. YD.
U	EXISTING 8" AGGREGATE BASE COURSE.
T	PROPOSED SHOULDER MATERIAL